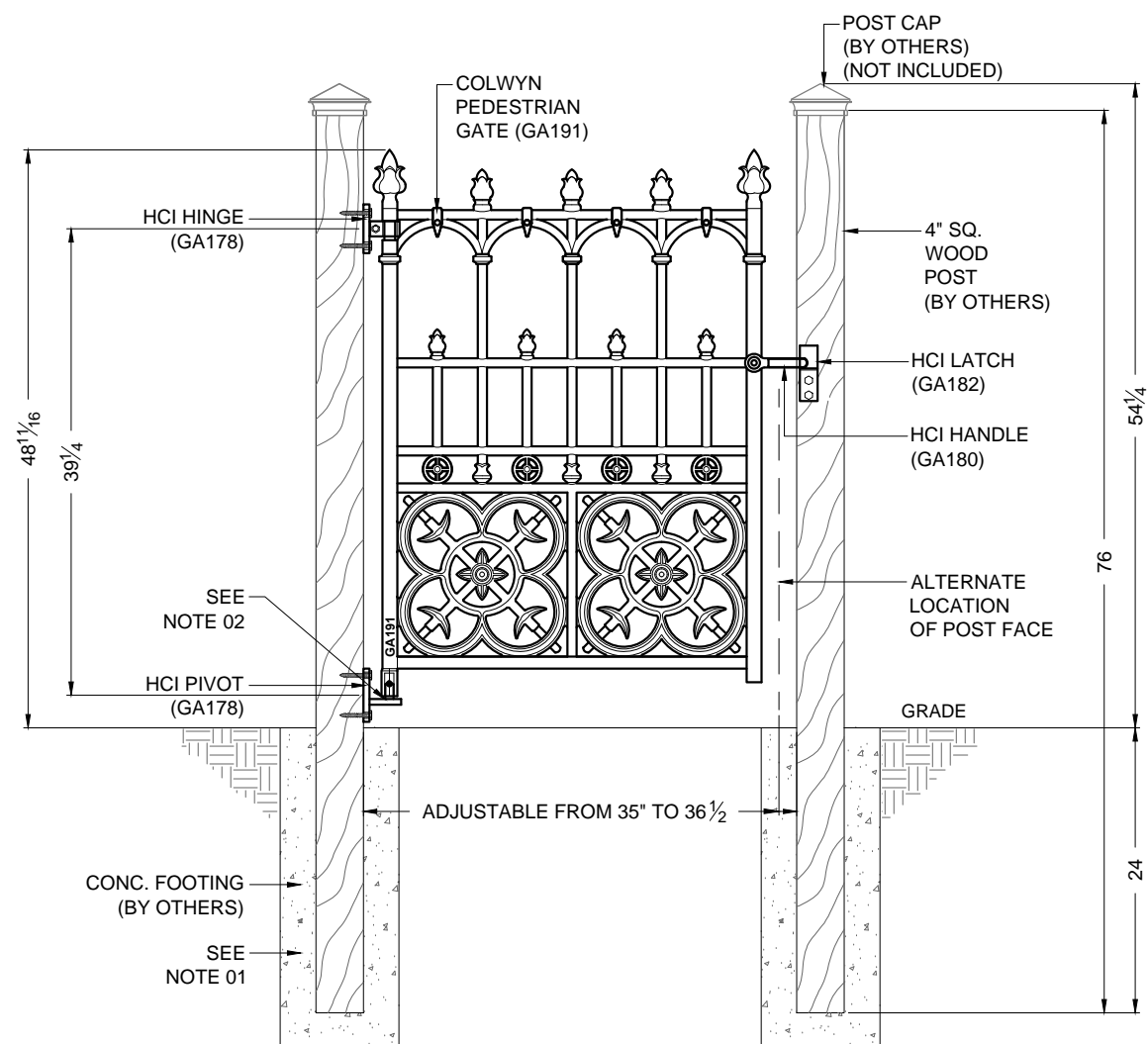


- NOTES:**
01. FOOTING SIZES TO BE DETERMINED DURING TIME OF INSTALLATION. DEPTH OF FOOTING DETERMINED BY SOIL CONDITIONS / FROST LINE.
  02. ALIGN BOTTOM OF HORIZONTAL GATE BAR WITH TOP OF PIVOT PLATE.



**HERITAGE  
CAST IRON**



WWW.HERITAGECASTIRONUSA.COM

**Construction**

All railing, gates and posts are crafted in solid cast iron, and are modular in design for ease of installation.

**Finishing**

Components are provided with a rust-preventative universal primer basecoat, ready for application of final paint finish upon installation

Item #	Qty.	Description	Weight
GA191	1	Colwyn Pedestrian Gate	99 lbs
GA178	1	Custom Hinge / Pivot Set	
GA180	1	Handle	
GA182	1	Custom Latch	

**Pricing**

GATE:	\$ 456.00
HARDWARE:	\$ 99.00
<b>MSRP:</b>	<b>\$ 555.00</b>

SCALE : 3/4"=1'-0"

**COLWYN  
GA191-02**