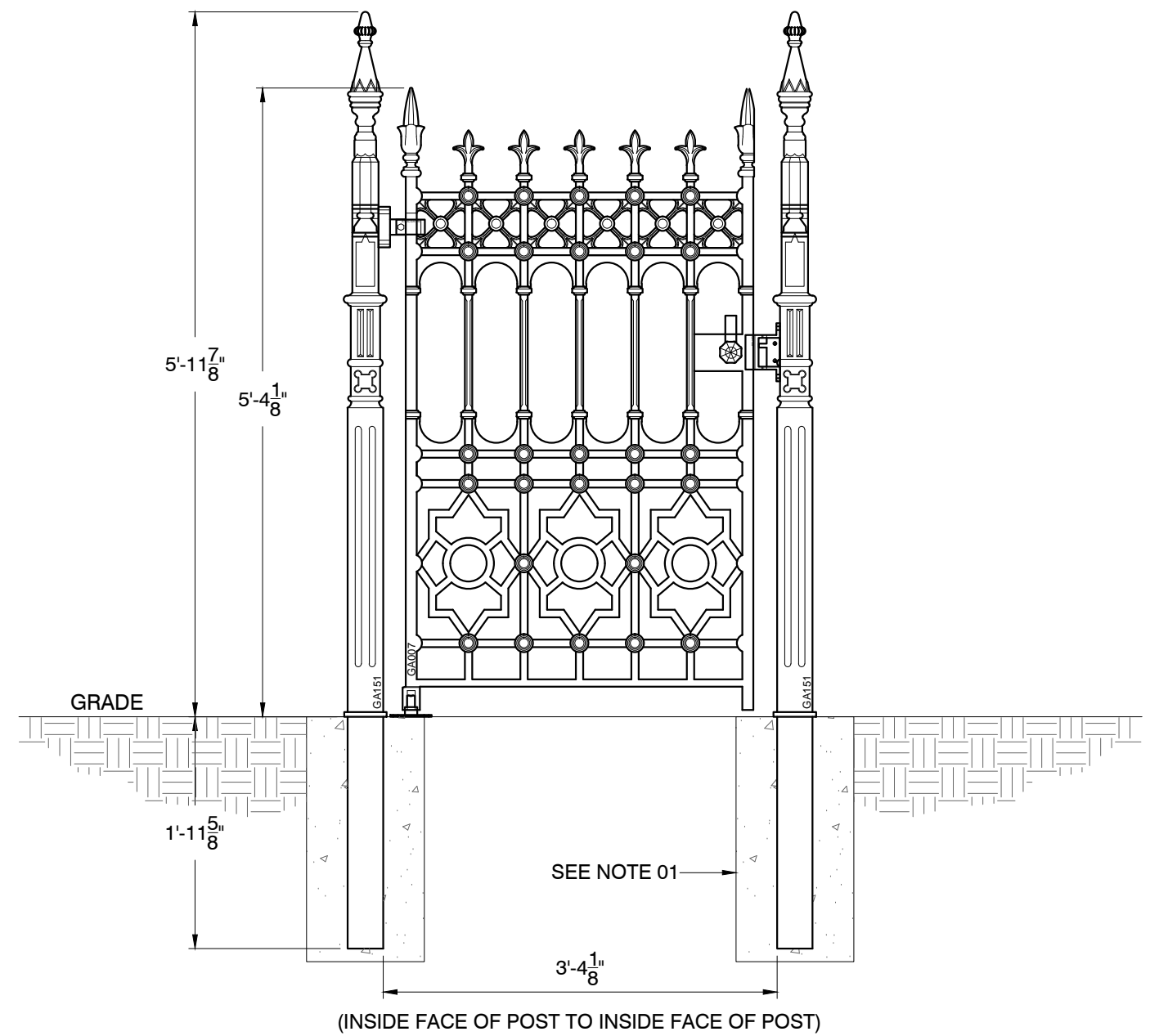


NOTES:  
 01. FOOTING SIZES TO BE DETERMINED DURING TIME OF INSTALLATION. DEPTH OF FOOTING DETERMINED BY SOIL CONDITIONS / FROST LINE.



**Construction**  
 All railing, gates and posts are crafted in solid cast iron, and are modular in design for ease of installation.

**Finishing**  
 Components are provided with a rust-preventative universal primer basecoat, ready for application of final paint finish upon installation.

| Item # | Qty. | Description                                  | Weight       |
|--------|------|--|--------------|
| GA007  | 1    | Stewart 3' Pedestrian Gate                   | 257 lbs      |
| GA151  | 2    | Gothic Pedestrian Gate Post with Root Fixing | 264 lbs Each |
| GA174  | 1    | Gothic Hinge And Pivot Set                   |              |
| GA158  | 1    | Pedestrian Gate Handle And Striker           |              |

| Pricing      |                   |
|--------------|-------------------|
| GATE:        | \$ 1037.33        |
| POSTS:       | \$ 2714.40        |
| HARDWARE:    | \$ 110.40         |
| <b>MSRP:</b> | <b>\$ 3862.13</b> |

SCALE : 3/4"=1'-0"

**STEWART  
 GA007-02**