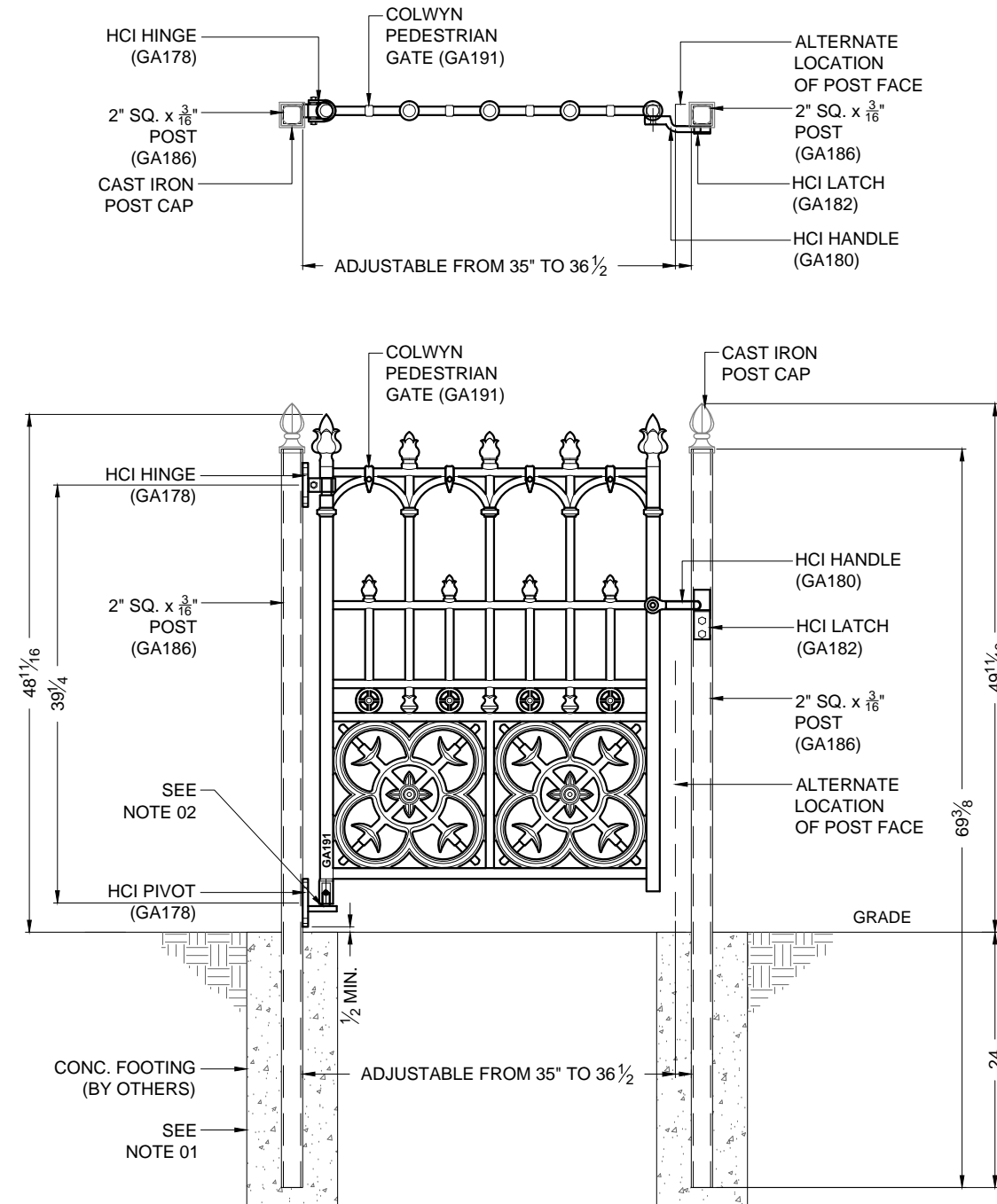


NOTES:

01. FOOTING SIZES TO BE DETERMINED DURING TIME OF INSTALLATION. DEPTH OF FOOTING DETERMINED BY SOIL CONDITIONS / FROST LINE.
02. ALIGN BOTTOM OF HORIZONTAL GATE BAR WITH TOP OF PIVOT PLATE.



**HERITAGE
CAST IRON**



WWW.HERITAGECASTIRONUSA.COM

Construction

All railing, gates and posts are crafted in solid cast iron, and are modular in design for ease of installation.

Finishing

Components are provided with a rust-preventative universal primer basecoat, ready for application of final paint finish upon installation.

Item #	Qty.	Description	Weight
GA191	1	Colwyn Pedestrian Gate	99 lbs
GA186	2	2" Sq. x 3/16" Post	
GA178	1	Custom Hinge / Pivot Set	
GA180	1	Handle	
GA182	1	Custom Latch	

Pricing

GATE:	\$ 456.00
POSTS:	\$ 99.00
HARDWARE:	\$ 99.00
MSRP:	\$ 654.00

SCALE : 3/4"=1'-0"

**COLWYN
GA191-01**